

Operating Instructions for the TAKE-A-LABEL Stainless Steel Label Dispenser

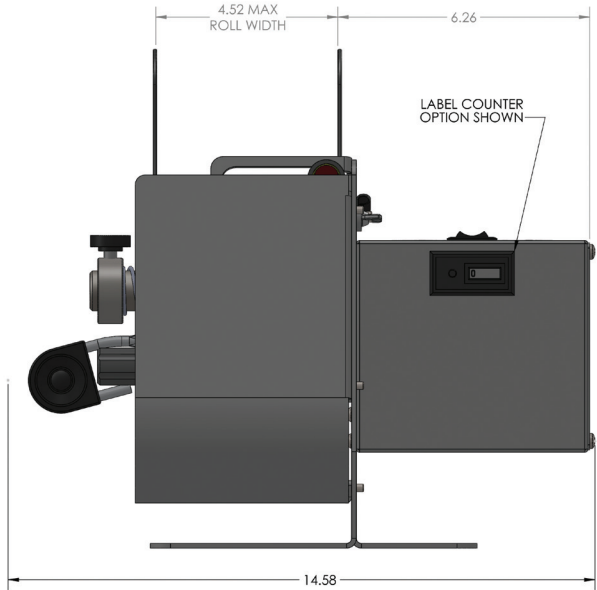
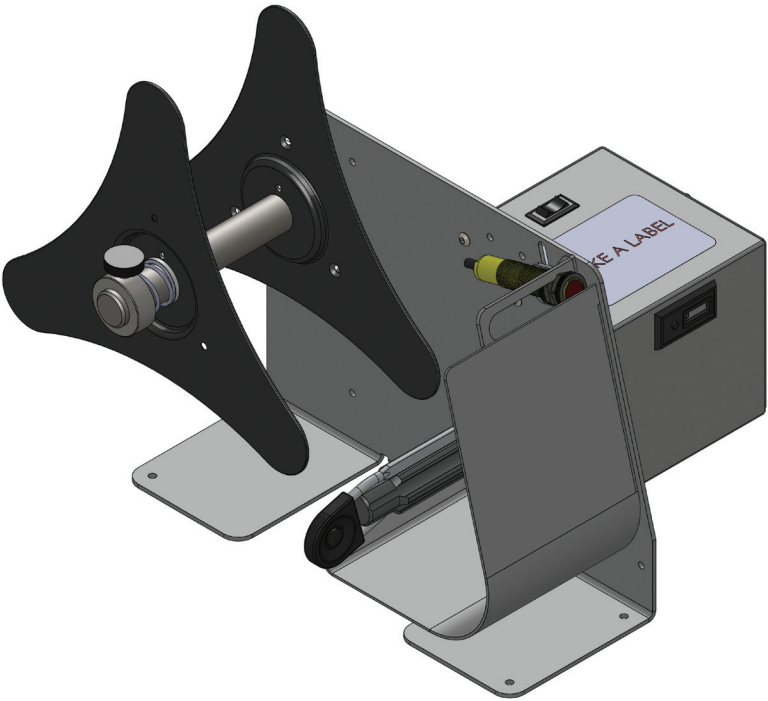
Note: The TAKE-A-LABEL dispenser is shipped mounted to a base to prevent shifting in the container.

1. Remove the machine from the base.
Always load the TAKE-A-LABEL dispenser with the On-Off switch in the (OFF) position.
2. To load a roll of labels on the TAKE-A-LABEL, loosen the unwind hub screw (57) on the unwind collar (56) and remove the collar, unwind washer, unwind spring, and disc from the unwind shaft.
3. Place the roll of labels on the unwind shaft between the two unwind discs. Place the roll with the beginning of the roll on the bottom with the web dispensing to your right as you face the side of the machine.
4. Replace the unwind disc, unwind spring, and collar onto unwind shaft. If using labels on a 3" diameter core, the hub on each disc will fit inside the core and support the roll of labels. If the labels are on a 1" core, simply slide the disc up snugly against the roll of labels. When the disc is in place, tighten the unwind hub screw against unwind shaft.
5. Thread the loose end of the labels under and up the front of the peel plate.
6. Pull the labels over the top of the peel plate far enough to reach the waste take-up roll.
7. Remove the waste wind clip, thread the label backing paper under the clip, and reinsert clip over loose paper.
8. Position the Photo Eye by loosening the wing nuts and moving assembly to the right or left, so the sensor is at or near the center of the labels. The Photo Eye can be tilted forward or backward by loosening the mounting bracket's vertical adjustment wing nut.



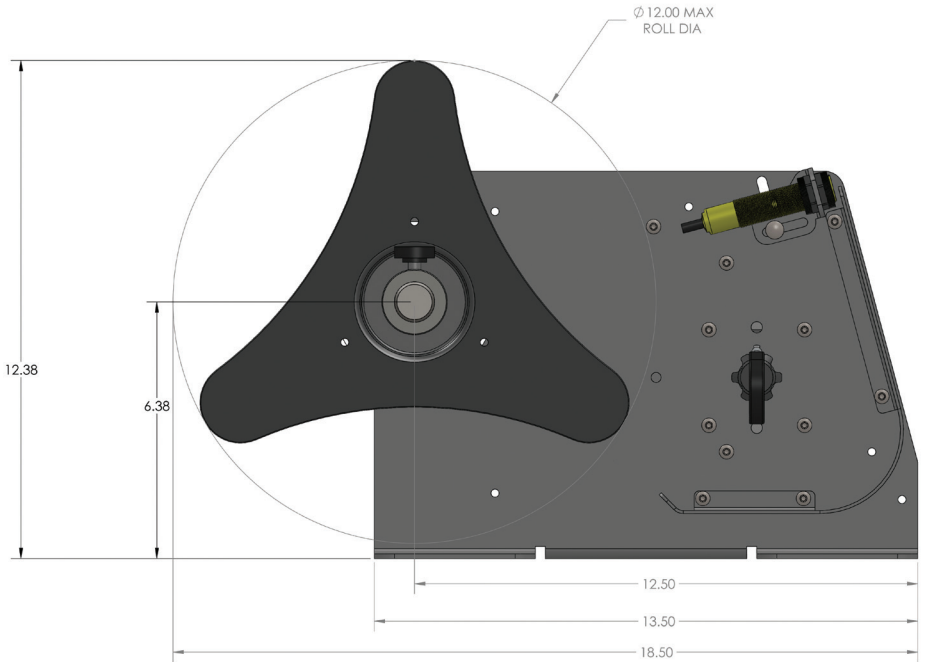
Model TAL-450-SS Shown

9. Turn on the On-Off switch. The waste wind shaft will turn, winding up the backing paper and dispensing a label at the top of the peel plate. When the Photo Eye senses the dispensed portion of the label, the motor will stop. As each label is removed, the machine will operate until the next label is in position to be removed. **(CAUTION:)** Turn off switch before removing wound up waste.
10. If the labels tend to follow the backing paper over the top of the peel plate instead of peeling off, then there is insufficient tension on the web of the labels. The shaft adjustment collar should be moved in to put more tension on the web.
11. If the motor stalls it may be necessary to move the shaft collar out to reduce the amount of unwind tension.



General Specifications, Model 450SS

Size (Approx.):
14.58W x 12.38H x 18.50D
Shipping Weight:
24 lbs (10.9 KG)
Electrical:
110/120VAC, 50/60HZ,
4 AMP FUSE



Model TAL-450-SS Shown

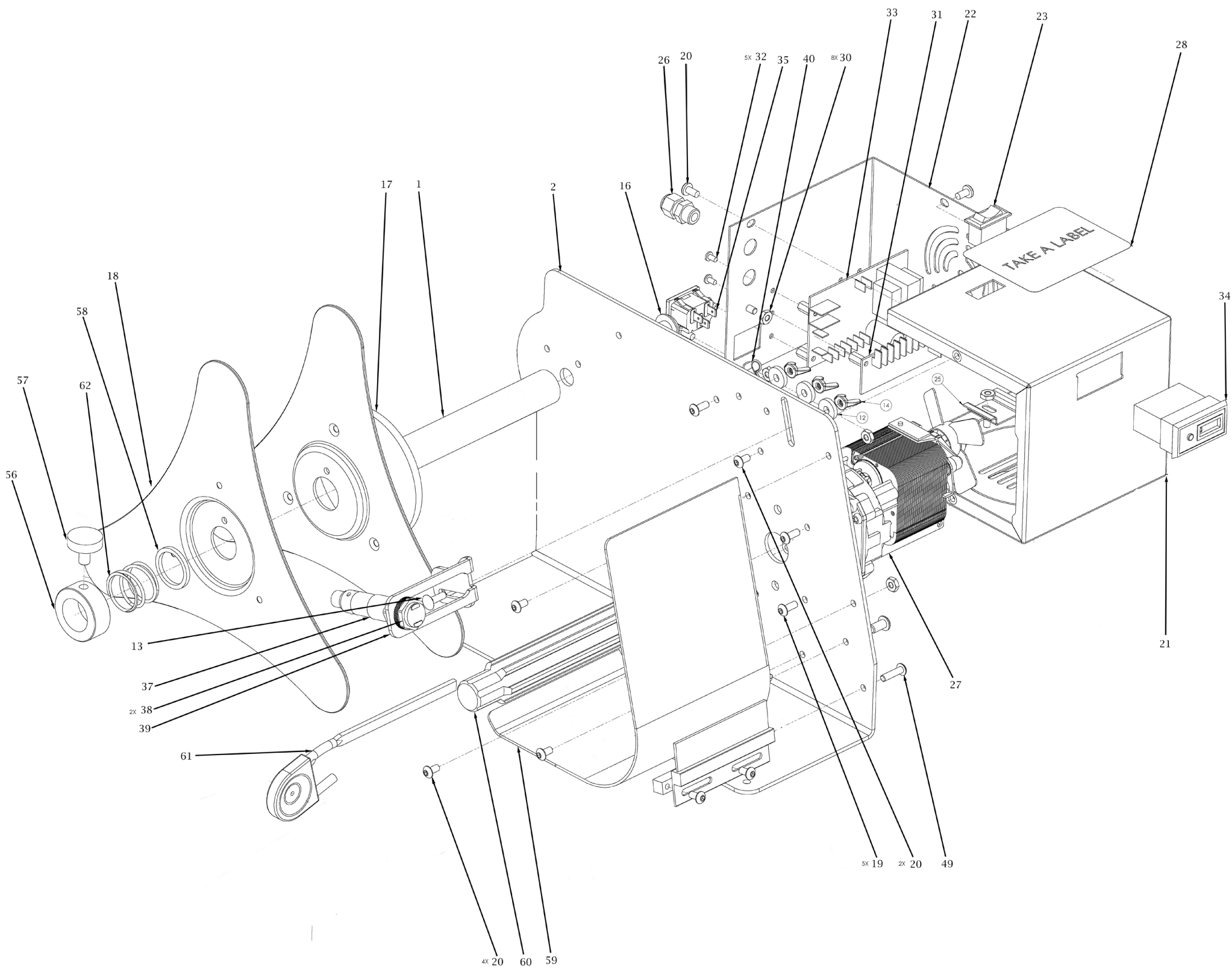


TAKE-A-LABEL, Inc.

The Industry Standard in Label Dispensers and Applicators



TAL 450SS Label Dispenser Exploded View



| ITEM# | PART NUMBER AND DESCRIPTION | NOTES | QTY. |
|------------------------------------|---|--|------|
| 1 | 25109-SS, TAL-250 Unwind Shaft | TAL-250 Size | 1 |
| 1 | 45109-SS, TAL-450 Unwind Shaft | TAL-450 Size | 1 |
| 1 | 72609-SS, TAL-750 Unwind Shaft | TAL-750 Size | 1 |
| 2 | 25201-SS, 250, 450, 750 Main frame | | 1 |
| 12 | 45182, Washer, nylon | | 5 |
| 13 | 45181-SS, Carriage Bolt | | 2 |
| 14 | 45180-SS, Wing Nut | | 5 |
| 16 | 30653-SS, 1/2-13x.75 BHCS | | 1 |
| 17 | 72618, Felt Washer | | 1 |
| 18 | 45136, Unwind Disc | | 2 |
| 19 | 10-32x0.5 BHCS | | 5 |
| 20 | 10-32x0.375 BHCS | | 10 |
| 21 | 25202-SS, 250, 450, 750 Motor housing | | 1 |
| 22 | 25203-SS, 250, 450, 750 Rear/side cover | | 1 |
| 23 | 40007, Power On/Off switch | | 1 |
| 26 | 81912, Small cord grip | | 1 |
| 27 | 76800, Gear Motor | | 1 |
| 28 | 45133, Name Plate Label | | 1 |
| 30 | 10-32 Hex Nut | | 8 |
| 31 | 45100, PCB - 250, 450, 750 DV | | 1 |
| 32 | 6-32x0.25 BHCS | | 5 |
| 33 | 45102, Control Board - 450, 750 CS | Optional: Used with Special DC Photoeyes | 1 |
| 34 | 30202, Label Counter | Optional: Label Counter | 1 |
| 35 | 25211, IEC Outlet | | 1 |
| Not Shown | 25212, IEC Line cord, US | Not Shown | 1 |
| 37 | 25213, Photoeye | Photo Eye Label Sensor | 1 |
| 38 | 81904, Photo eye Ring Nut | Photo Eye Label Sensor | 2 |
| 39 | 25204-SS, Photo eye bracket | Photo Eye Label Sensor | 1 |
| 40 | 45186, P-clip | | 1 |
| 56 | 26001-SS, Shaft Collar | | 1 |
| 57 | 26002-SS, Knob | | 1 |
| 58 | 25112, Washer | | 1 |
| 59 | 25116-SS, TAL-250 Peel Plate | TAL-250 Size | 1 |
| 59 | 45111-SS, TAL-450 Peel Plate | TAL-450 Size | 1 |
| 59 | 72612-SS, TAL-750 Peel Plate | TAL-750 Size | 1 |
| 60 | 25114-SS, TAL-250 Waste Rewind Shaft | TAL-250 Size | 1 |
| 60 | 45112-SS, TAL-450 Waste Rewind Shaft | TAL-450 Size | 1 |
| 60 | 72613-SS, TAL-750 Waste Rewind Shaft | TAL-750 Size | 1 |
| 61 | 25115, Waste Wind Clip | TAL-250 Size | 1 |
| 61 | 45131, Waste Wind Clip | TAL-450 Size | 1 |
| 61 | 72610, Waste Wind Clip | TAL-750 Size | 1 |
| 62 | 25113-SS, Unwind Spring | | 1 |
| Common Parts for Prior Model Years | | | |
| Not Shown | 45208, Trip Wire | 2014 and Older Models | 1 |
| Not Shown | 45309, Switch Assembly | 2016 and Older Models | 1 |
| Not Shown | 81905, Photo Eye | 2016 and Older Models | 1 |
| Not Shown | 81906, Relay | 2016 and Older Models | 1 |
| Not Shown | 81907, Relay Socket | 2016 and Older Models | 1 |
| Not Shown | 25119, Lighted On/Off Switch | 2007 and Older Models | 1 |
| Not Shown | 45217, Power Cord | 2016 and Older Models | 1 |
| Not Shown | 45153, Power Cord Clamp | 2016 and Older Models | 1 |
| Not Shown | 45155, Fuse Holder | 2016 and Older Models | 1 |
| Not Shown | 45157, Fuse | 2016 and Older Models | 1 |