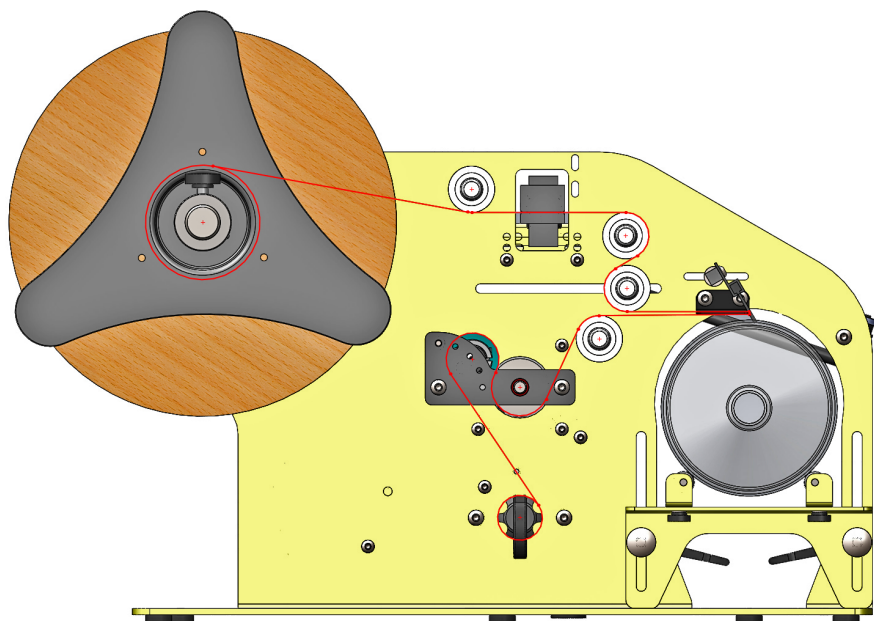




***OPERATIONS MANUAL***  
***MODEL TAL-2100ER***  
***ELECTRIC ROUND PRODUCT***  
***LABEL APPLICATOR***



TAKE-A-LABEL®  
16900 Power Dr.  
Nunica, MI 49448  
Phone: (616) 837-9300  
Fax: (616) 937-9301  
[www.take-a-label.com](http://www.take-a-label.com)  
Email: [sales@take-a-label.com](mailto:sales@take-a-label.com)

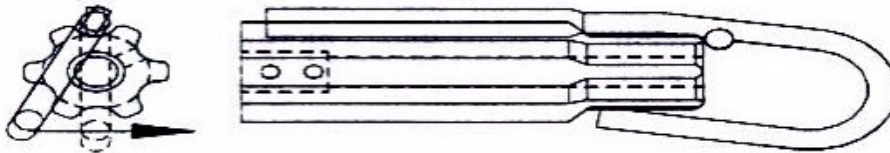


Helpful setup videos can be found on included USB or at  
[www.take-a-label.com](http://www.take-a-label.com)

## ***TAL-2100ER Round Product Applicator***

### **Label Threading:**

1. Remove outer unwind disc (47) install new roll of labels and replace disc.
2. Pull label web under the first roller (28A), throw the photo eye (23). Continue pulling the label web over the top and then wrapping around the next roller (28B). Pull the web back over the top and around the label stop roller (28C). Then pull the webbing back to the front of the applicator and over the peel edge (1).
3. Rotate application brush (5) up to allow web clearance.
4. Pull web around the peel plate (1).
5. Pull web back and under the drive roller (30), and up between the drive roller (30) and pinch roller (26), then back down to the waist wind shaft (45). Note: The pinch roller (26) is spring loaded. Slight pressure will be needed to separate the pinch roller from the drive roller for threading.
6. Install waist wind clip (46) on waist wind shaft (45) placing the webbing between the shaft and the clip.



7. Cycle the applicator by stepping on the footswitch (24).



### **Teaching the photo eye:**

1. It is recommended that you teach the photo eye (23) with every new roll of labels used.
2. Remove one label from the webbing and place the webbing only in the photo eye.
3. Press and hold the “Normal” button on photo eye for 3 seconds. When the lights finish flashing the photo eye is taught.



### **Setting label stop:**

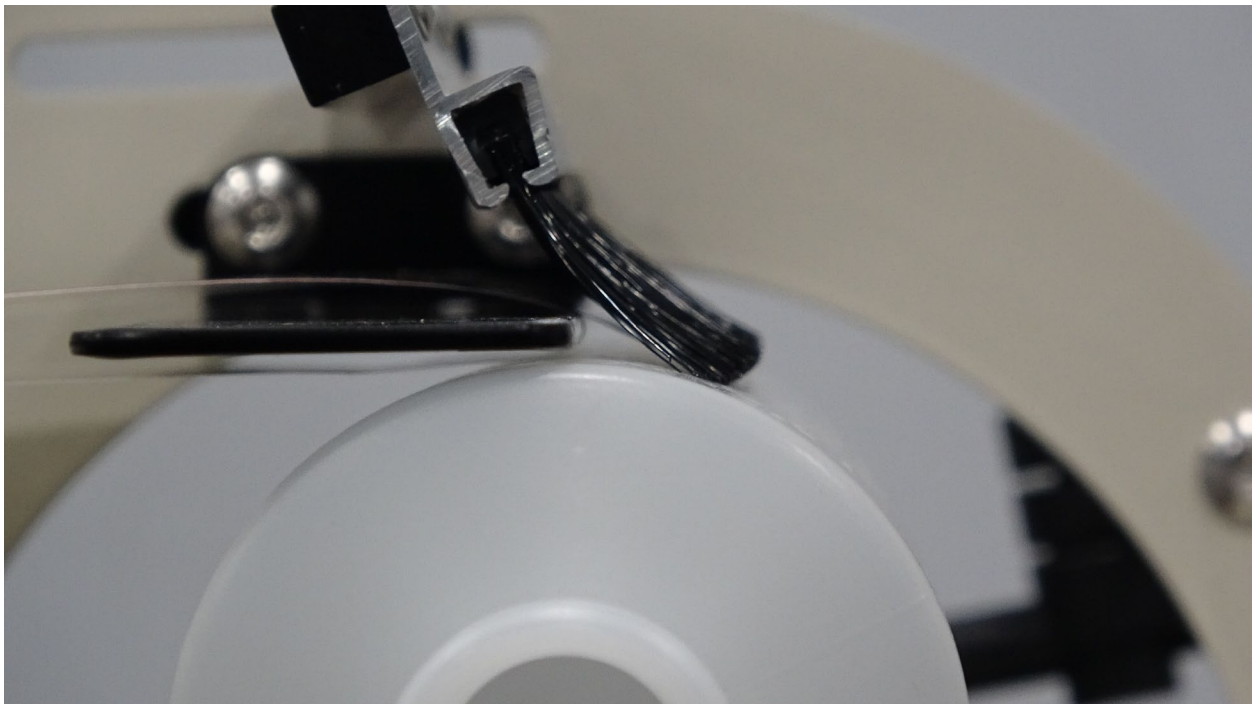
1. For the TAL-2100ER to work properly one label must completely dispense with the next label stopped right at the peel edge (1).
2. Cycle the unit once by stepping on the footswitch (24) to see where the label is stopping.  
Note: Rotate application brush (5) up to allow visual inspection if needed.
3. Slide the label stop roller (28C) forward or backward as needed until the label is stopping at the peel edge (1).





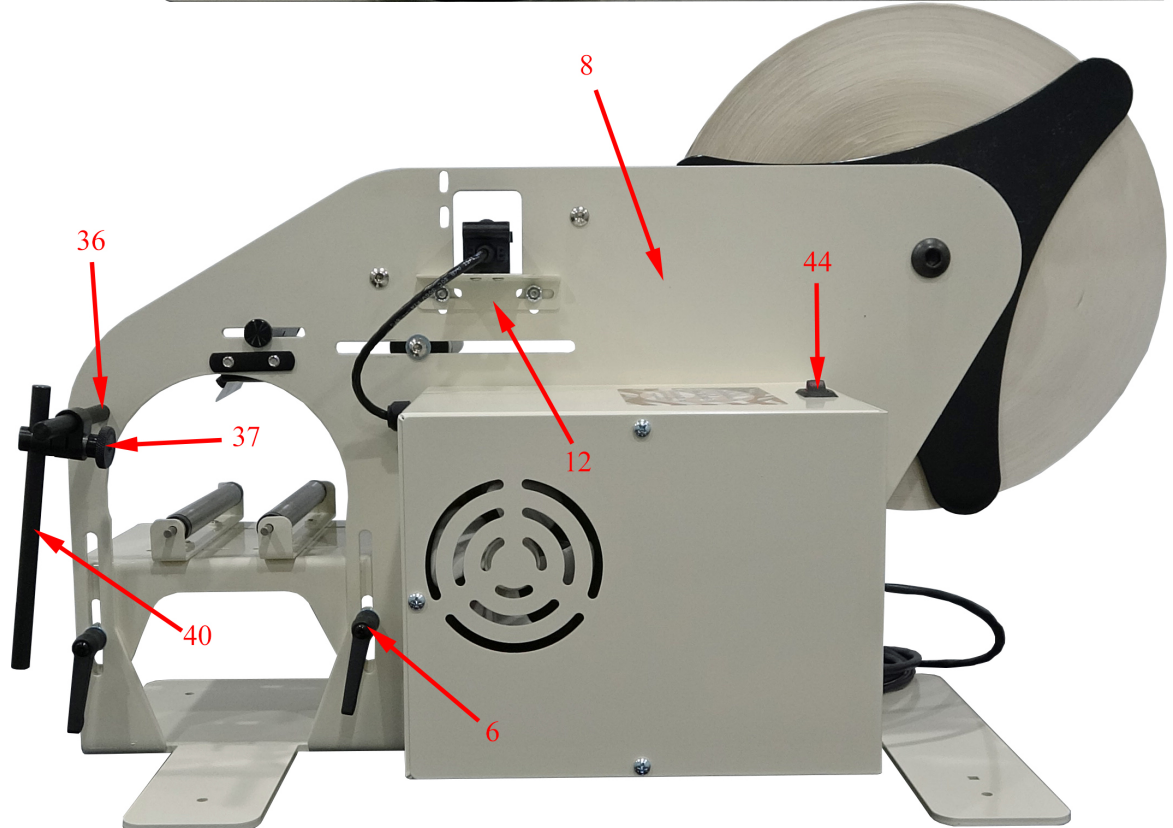
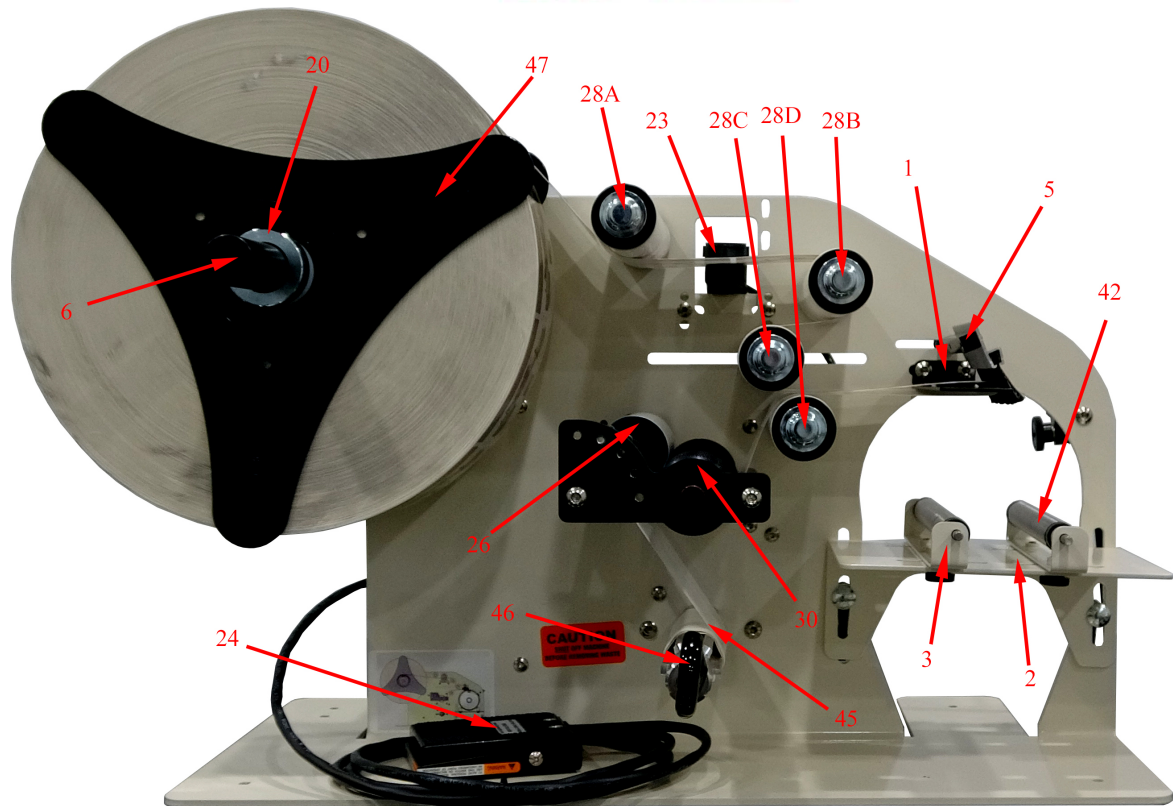
### **Product Carriage Adjustment:**

1. Loosen the thumb screws under the product support rollers (42). Adjust rollers so your product is in the center of the rollers.
2. The product should be setting on the rollers so it will roll easily. Keep the center of the bottle lined up with the peel edge. Do not place the product too deep between the support rollers, or it may not roll smoothly.
3. To raise or lower the product carriage, loosen the two product carriage handles (6) on the main frame (8).
4. Raise the carriage leaving a gap of approximately 1/16" between the bottom of the peel plate and the product.
5. It is often helpful to have a slight tilt to the product carriage, with the front roller lower than the back roller. This will make it easier for the bottle to roll.
6. Rotate application brush (5) down to help stick labels to product.





# TAKE A LABEL





## TAL-2100ER Parts List

| Item # | Description             | #  |
|--------|-------------------------|----|
| 11002  | Peel Plate              | 1  |
| 11003  | Carriage Support        | 2  |
| 11004  | Roller Support Bracket  | 3  |
| 11005  | Guide Rod Support Post  | 4  |
| 11006  | Wipe Down Support Rod   | 5  |
| 11007  | Carriage Ratchet Handle | 6  |
| 11008  | Unwind Shaft            | 7  |
| 21001  | Frame                   | 8  |
| 21002  | Housing                 | 9  |
| 21003  | Housing Cover           | 10 |
| 21004  | Outboard Support Plate  | 11 |
| 21005  | Label Sensor Bracket    | 12 |
| 21010  | Pinch Roller Shaft      | 13 |
| 21024  | Gates Drive Belt        | 14 |
| 21025  | Bronze Bushing          | 15 |
| 21026  | Motor Spacers           | 16 |
| 21027  | Left Torsion Spring     | 17 |
| 21028  | Right Torsion Spring    | 18 |
| 25112  | Washer                  | 19 |
| 25113  | Spring                  | 20 |
| 26001  | Collar                  | 21 |
| 26002  | Hub Screw               | 22 |
| 30106  | Tri-Tronics Photo Eye   | 23 |
| 30110  | Footswitch              | 24 |
| 30653  | 1/2 -13 BHSCS           | 25 |
| 31002  | Pinch Roller            | 26 |
| 31003  | Outboard Support Shaft  | 27 |
| 31004  | Idler Roller            | 28 |
| 31009  | Pinch Roller Side Plate | 29 |
| 31010  | Drive Roller            | 30 |
| 31015  | Plastic Bearing         | 31 |
| 31017  | Plastic Bushing         | 32 |
| 31029  | Plastic Bushing         | 33 |
| 31060  | Rewind Bracket          | 34 |
| 31282  | V Belt Tensioner        | 35 |
| 31366  | Extension Rod           | 36 |
| 31370  | Guide Clamp             | 37 |
| 31373  | V Belt Pulley           | 38 |
| 31380  | V Belt Tensioner Roller | 39 |
| 31803  | Guide Rod Support Shaft | 40 |
| 37004  | Brush and Holder        | 41 |
| 37007  | Product Rollers         | 42 |
| 38003  | Control Board           | 43 |



|       |                  |    |
|-------|------------------|----|
| 40007 | On/Off Switch    | 44 |
| 45129 | W/W Shaft        | 45 |
| 45131 | Clip             | 46 |
| 45136 | Unwind Disc      | 47 |
| 45155 | Fuse Holder      | 49 |
| 45157 | Fuse             | 50 |
| 25213 | Power Cord       | 51 |
| 72618 | Felt Pad         | 52 |
| 76800 | Heavy Duty Motor | 53 |
| 81912 | Small Cord Grip  | 54 |